

FM180, OIML 10,000e approved weighing indicator specially designed for static weighing and simple counting tasks. The 7 function keys provide easy, fast, direct, and straightforward operation. Supported by the built-in state-of-the-art technologies and knowledge, FM180 delivers unexceptional fast, stable, and error-free weighing results at all times.

Key Features:

- 24 bit Low-Noise Delta to Sigma to Delta (Δ - Σ) Analog-to-Digital Converter
- Support Single or Dual Weighing Range Mode
Free Capacity and Division Setting
- kg & lb Conversion (Single Weighing Range Mode only)
- True 6-wire (with Remote Sense) Load Cell Compensation System
- Real Time Clock Linearity Compensation ON or OFF Independent Zero Calibration
- User selectable dot or comma for decimal point
- Calibration and Metrological Control / Access by Hardware or Software
- Non-Resettable Trailer Count to Record Calibration and Metrology Parameters Changes. Gravity Compensation via Key Board
- 6 x 28mm Wide Angle LCD Numeric Digits
- 1 x RS232 Output Port, Rechargeable Battery, Backlight, Pillar Mount Holder (ψ 35~38mm) and Universal Power Adaptor Included

Approved Functions:

- Weighing and Simple Counting
- Single and Dual Weighing Range
- Memory Accumulation
- Pre-set Tare
- Gross/Net Indicator
- Weighing Range Indicator
- Memory Indicator
- Standard and User Programmable Print Format
- Ticket and Label Printing

Options:

- WM-EP Wireless Communication Module
- Stainless Steel Wall/Desk Mount Holder
- SP-POS58EZ Thermal Printer
- RD-DOT Dot Matrix Remote Display
- LP-50 Label Printer

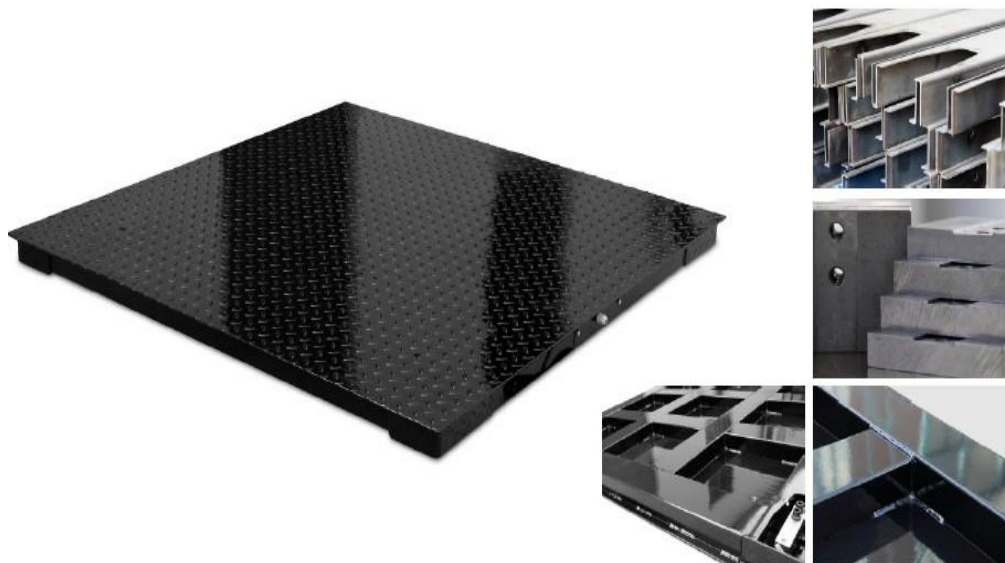


User Selectable Parameters:

- 6 x Auto Power Off Time
- 4 x Filter Intensity Mode
- 3 x Backlight Mode
- 3 x RS232 Data Output Baud Rate
- 3 x Data Format
- 3 x M+ Mode
- 3 x Data Output Mode
- 4 x Data Transmission Time Interval
- 7 x Initial Zero Range

XSB is designed & built to meet a wide range of heavy traffic & high resolution industrial applications up to 6000kg.

It delivers un-exceptional reliability, accuracy and skin smooth performance to meet weighing, batching and counting needs.



Specifications:

Model No	Platform Size (mm)		Load Cell		
XSB-0808 (A, N)	800 x 800		Type: -		
XSB-0810 (A, N)	800 x 1000		• A: - OIML / NTEP C3 approved		
XSB-1010 (A, N)	1000 x 1000		• N: - FM Special Grade Assignment: 4 x 500kg for Max = 1T		
XSB-1012 (A, N)	1000 x 1200		• 4 x 1000kg for Max = 2T		
XSB-1212 (A, N)	1200 x 1200		• 4 x 1500kg for Max = 3T		
XSB-1215 (A, N)	1200 x 1500		• 4 x 2000kg for Max = 5T		
XSB-1515 (A, N)	1500 x 1500		• 4 x 3000kg for Max = 6T		
XSB-1520 (A, N)	1500 x 2000				
XSB-2020 (A, N)	2000 x 2000				
Nominal Capacity (Max)	1T	2T	5T	6T	
Adjusted Eccentric Accuracy (kg)	0.05	0.1	0.2	0.5	0.5

Quality, Structural Strength & Accuracy are Safeguarded by:

- Material Grade
- Material Thickness
- Tooling & Method used to handle Material Cutting, Blending ... etc.
- Smart & CNC Made Oversized Heavy Duty Load Cell Supporting & Mounting Blocks
- Strict Construction Accuracy Standards Applied
- Smart & High-Quality Stainless Steel Junction Box used.
- OIML / NTEP C3 Approved or FM Special Grade Load Cell
- High-Density Channel Frame Allocation
- High-Quality Epoxy Coating

Order Code:-

Model No.

- Nominal Capacity - Load Cell Type.
Examples -
- XSB-1010-1T-A for platform size = 1 x 1m; nominal capacity = 500kg; with approved load cells.
- XSB-1215-2T-N for platform size = 1.2 x 1.5m; nominal capacity = 2000kg; with FM Special Grade load cells

	Global Asia Trading Company
	Local agent of Fidelity Measurement Co. Ltd.,
	Website : www.gatcobd.com
	E-Mail : info@gatcobd.com
Contact : +88 01711 531 809	